

IPC-HUM8441E-L3-S2

4MP Covert Pinhole Wizmind Network Camera-Lens Unit




Launched by Dahua Technology, Dahua WizMind is a full portfolio of solutions composed of project-oriented products including IPC, NVR, PTZ, XVR, Thermal and software platform which adopts industry-leading deep learning algorithms. Focusing on customer's requirements, WizMind provides precise, reliable and comprehensive AI solutions for verticals.

Series Overview

With deep learning algorithm, the separate pinhole camera supports functions such as perimeter protection and face recognition. Working with different types of lenses, the camera is widely applied to hidden or small scenes such as banks and advertising screens, meeting requirements in different installation scenes.

Functions

WDR

With advanced Wide Dynamic Range (WDR) technology, Dahua network camera provides clear details in the environment of strong brightness contrast. The bright and dark area can get clear video even in high brightness environment or with backlight shadow.

Cyber Security

Dahua network camera is equipped with a series of key security technologies, such as security authentication and authorization, access control, trusted protection, encrypted transmission, and encrypted storage, which improve its security defense and data protection, and prevent malicious programs from invading the device.

Protection (IP67)

IP67: The camera passes a series of strict test on dust and soak. It has dust-proof function, and the enclosure can work normal after soaking in 1 m deep water for 30 minutes.

- Starlight 4-MP 1/2.7" CMOS image sensor, low luminance, and high definition image.
- Outputs max. 4MP (2688 × 1520)@25/30 fps.
- Separate pinhole lens comes with an 8 m coaxial cable, and it works with 4 MP Network Camera Main Box.
- IP67 protection (L3).



Technical Specification

Camera

Image Sensor	1/2.7" CMOS
Max. Resolution	2688 (H) × 1520 (V)
Scanning System	Progressive
Min. Illumination	0.002 lux@F1.6 (Color, 30 IRE) 0.0002 lux@F1.6 (B/W, 30 IRE)
S/N Ratio	>56 dB

Lens

Lens Type	Fixed-focal
Lens Mount	M12
Focal Length	2.8 mm; 3.6 mm; 6 mm; 8 mm
Max. Aperture	F1.6
Field of View	2.8 mm: H: 102°; V: 54°; D: 121° 3.6 mm: H: 84°; V: 42°; D: 101° 6 mm: H: 52°; V: 28°; D: 61° 8 mm: H: 40°; V: 23°; D: 46°
Iris Control	Fixed
Close Focus Distance	2.8 mm: 1.1 m (3.60 ft) 3.6 mm: 1.7 m (5.58 ft) 6 mm: 3.1 m (10.17 ft) 8 mm: 4.7 m (10.83 ft)

	Lens	Detect	Observe	Recognize	Identify
DORI Distance	2.8 mm	63.6 m (208.66 ft)	25.4 m (83.33 ft)	12.7 m (41.67 ft)	6.4 m (20.99 ft)
	3.6 mm	85.4 m (193.23 ft)	34.2 m (112.20 ft)	17.1 m (56.10 ft)	8.5 m (27.89 ft)
	6 mm	124.0 m (406.82 ft)	49.6 m (162.73 ft)	24.8 m (81.36 ft)	12.4 m (40.68 ft)
	8 mm	150.4 m (493.44 ft)	60.2m (197.51 ft)	30.1 m (98.75 ft)	15.0 m (49.21 ft)

Video

Day/Night	Color/B/W
WDR	WDR

Certification

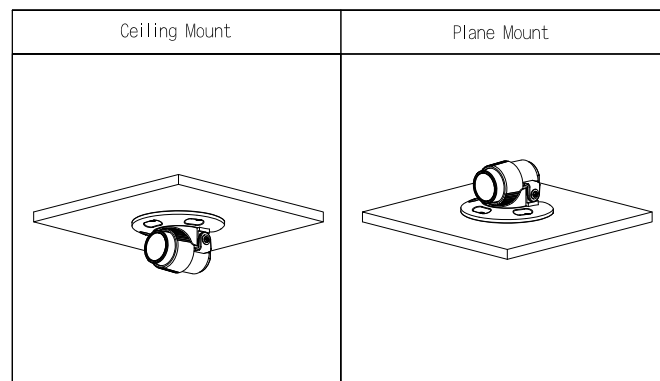
Certifications	CE-LVD: EN62368-1; CE-EMC: Electromagnetic Compatibility Directive 2014/30/EU; FCC: 47 CFR FCC Part 15, Subpart B
----------------	---

Environment

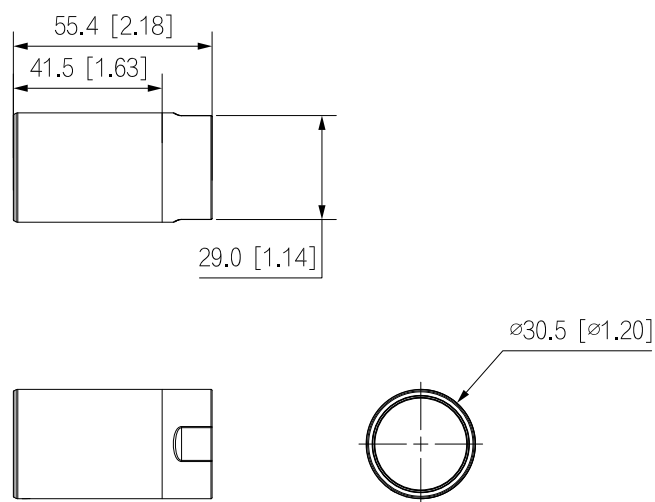
Operating Temperature	−40 °C to +60 °C (−40 °F to +140 °F)
Operating Humidity	≤95%
Storage Temperature	−40 °C to +60 °C (−40 °F to +140 °F)
Protection	IP67 (L3)

Structure

Casing	Metal
Product Dimensions	L3: Φ30.5 mm × 55.4 mm (Φ1.20" × 2.18")
Net Weight	210 g (0.46 lb)
Gross Weight	376 g (0.83 lb)



Dimensions (mm[inch])



Ordering Information

Type	Model	Description
4MP Camera-Lens Unit	IPC-HUM8441E-L3-S2	4MP Covert Pinhole WizMind Network Camera-Lens Unit
Accessories	IPC-HUM8441-E1	4MP Covert Pinhole WizMind Network Camera-Main Box
	IPC-HUM8441-E2	4MP Covert Pinhole WizMind Network Camera-Main Box